



# KP+

## Moveable Screens



<b>Specifications &amp; Finishes</b>				
--------------------------------------	--	--	--	--

Model	H x W x D	Shipping Weight	Product Description	Color / Finishes
KP TS	64 1/2" x 31 15/16" x 1 1/8", 18"	46 lbs.	Free standing, moveable screen with steel frame and choice of fabric color. Choose fabric color from selection shown below.	Frame: Argent Silver, White or Anthracite Fabric Panel: Birch, Geranium, Green Apple, Magenta, Quarry Blue, Slate, Straw, Sunshine, Waterfall & Willow
KP1 TS	64 1/2" x 47 1/4" x 1 1/8", 18"	63 lbs.		

Model	H x W x D	Shipping Weight	Product Description	Color / Finishes
KP PC	64 1/2" x 31 15/16" x 1 1/8", 18"	27 lbs.	Free standing, moveable screen with steel frame and translucent polycarbonate panel.	Frame: Argent Silver, White or Anthracite with translucent polycarbonate panel
KP1 PC	64 1/2" x 47 1/4" x 1 1/8", 18"	47 lbs.		
KP Caster Assembly-1	N/A	3 lbs.	Single caster assembly for* KP+ screens - add 3 1/4" to height of unit.	Anthracite, White or Argent Silver
KP Caster Assembly-2	N/A	3 lbs.	Set of two caster assemblies for KP+ screens – add 3 1/4" to height of unit.	

KP screens can be joined together with a flexible connector (which is provided).

When two screens are connected, one can be positioned anywhere along a 180° arc.

Up to four screens can be joined together consecutively.

\*Required when joining units together. Contact Customer Service for assistance at 800-342-5725.

**Fabric Color Options:**



Geranium



Magenta



Sunshine



Straw



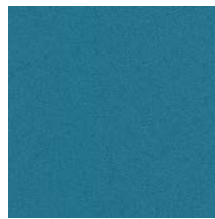
Birch



Green Apple



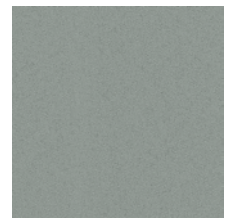
Willow



Waterfall



Quarry Blue



Slate

Other fabric colors are available from Interface Fabrics Anchorage collection; contact customer service for information.